



XB7200

Stacking Power Battery X-Ray Inspection Machine

This device achieves online fully automatic detection of multi-layer stacked power batteries, interfaces with upstream and downstream logistics lines, automatically takes the battery cells, puts them into the equipment for detection, and automatically sorts NG products. OK products are automatically taken out, output to the logistics line, and enter downstream equipment.

Product Features

Fully Automatic Detection:

Connect upstream and downstream equipment, conduct online automatic inspection and judgment, and automatically sort out defective products; Equipped with in-situ retesting function, optional with automatic reflux retesting function.

Real Time Monitoring:

All actions, signals and hardware status of the equipment are monitored in real time to facilitate product quality data analysis and safety production control.

Safety and Environmental Protection:

The device has safety interlocking and multiple protection functions, and any component on the surface of the body meets national safety radiation standards.

Easy to Operate:

The software interface is user-friendly, with one click model replacement and troubleshooting, and configured with permission management functions, making it easy to get started and improving work efficiency.

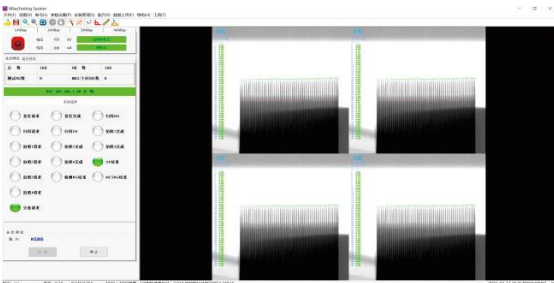
Image and Detection Data:

The battery test images and test data are saved together and can be displayed together in the software interface for easy viewing and analysis.

Device Functions

- Automatic code scanning, MES interaction, and data upload;
- Automatic loading, unloading, and NG sorting;
- Corner Overhang, Fold, Crack, Large Surface Folds, Tab Pulling Pins.

Operational Applications



Technical Parameter

Size	8500mm*3200mm*2800mm
Beat	≥24PPM and above (2 or 4 corners)
Excellence Rate	≥99.5%
Weighing	Measurement Accuracy ≤ 0.01g, Weighing ≥ 5kg
Equipment Failure Rate (DT)	≤2%
Overkill Rate	≤1.5%
Missed Kill Rate	≤0%
Incoming Method	logistics line
Radiation Safety Standards	≤1μSV/hr
Receiver	Linear Array Camera TDI or Flat Panel Detector

X-Ray Tube Parameters

Tube Voltage Range	40-90KV/40-130KV
Tube Current Range	10-200uA/10-300uA

Inspection Efficiency and Accuracy Parameters

Inspection Accuracy	15μm
Repetitive Testing Accuracy	±30μm

Other Parameters

Change Time	The change time for old varieties is ≤ 2 hours per person; The replacement time for new varieties is ≤ 4 hours per person.
Compatible Ranges	Compatible Ranges: Square aluminum shell: Length: 80~220mm; Width: 130~200mm; Thickness: 10-25mm. Blade Battery: Length 320~600mm; Width: 80~120mm; Thickness: 10~30mm
Testing Content	weighing, angle super hang, large area Wrinkles, ear creases, etc.

Applications

